

GE Healthcare



# Vivid *e*

Cardiovascular ultrasound system



# High performance quality.

# Low capital investment.

Yes, it's true. Now you can get great imaging in a solution that's still economical. All in a smart ultrasound system that goes to any clinical environment. That's the real beauty of Vivid *e*.





### **Remarkable. Portable. Affordable.**

By delivering high quality in an affordable solution, Vivide makes choosing a portable system as easy as using it. With comprehensive cardiac functionality built on TruScan architecture, you can use Vivide as either a primary or secondary diagnostic system. And its full shared-service capabilities include vascular, abdominal, and OB/GYN imaging.

### **Stress testing made easy.**

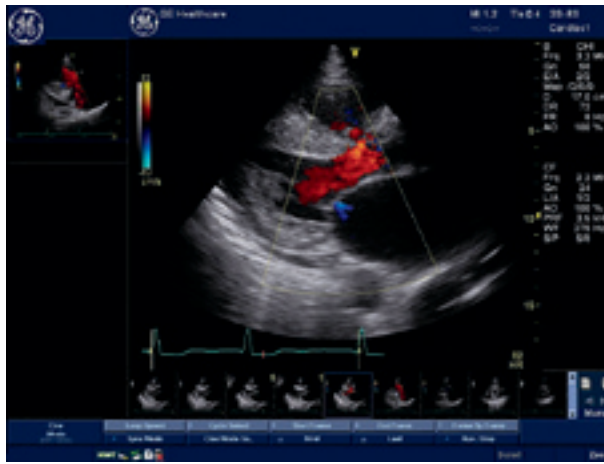
As a member of the GE Vivid family, a number of significant features have migrated from the Vivid 7, such as a stress echo package, allowing you to bring stress testing right into your office. By extending our offering of cardiovascular support, like reporting tools, this is the system that can fit your needs.

**With improvements in productivity and efficiency, the Vivide is productive and affordable and can help add value in echocardiography.**



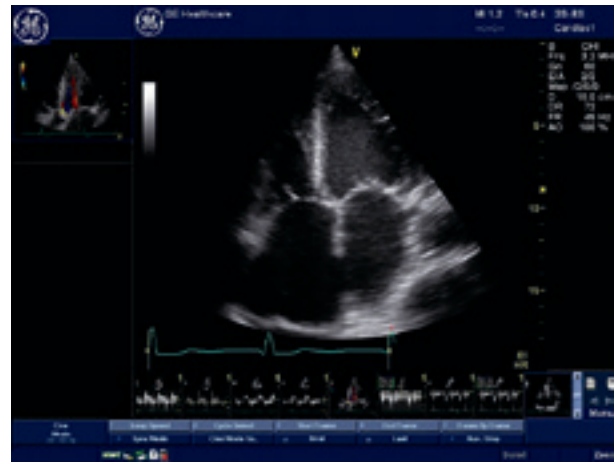
Get dynamic  
images of  
your patients.

Enhanced, real-time definition gives you the clinical confidence you've been waiting for in a compact, convenient and economical ultrasound system.



**TruScan delivers image quality you can depend on.**

Our TruScan architecture, with raw data acquisition, results in exceptional images that can then be viewed, measured, optimized and analyzed without losing any of the original image quality.



**Focusing on precise imaging.**

Dual focus for cardiac applications, and range focus for vascular and abdominal imaging, strengthen the quality of both applications even further.



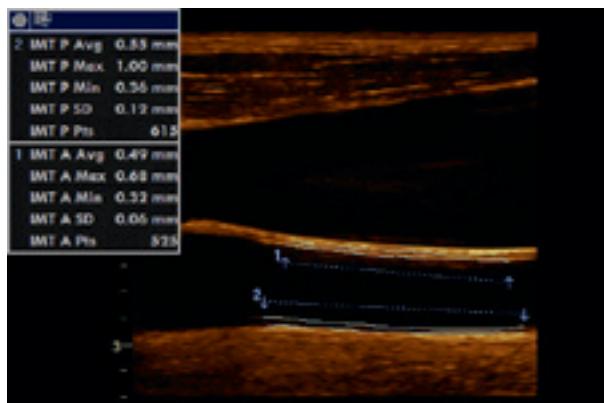
**Compound imaging produces a brilliant combination.**

With the inclusion of compound imaging, multiple co-planar images from different angles are combined into a single, real-time image. You get improved border definition and contrast resolution, plus reduced angular dependence of edges.



**TEE expands your capabilities.**

TEE imaging, provides added capabilities and expansion to other departments without sacrificing performance using TruScan architecture. The TEE offers full functionality with the resolution and penetration needed for patients in the OR, echo lab, or cath lab.



**Introducing IMT measurement to calculate intima-media wall thickness that helps assess the progression of atherosclerotic disease.**

- The IMT technique reduces the time taken to perform the measurement compared to manual measurement.
- The methodology is robust and reproducible to help build confidence among sonographers and physicians.
- The measurement procedure is not operator dependent as compared to manual IMT measurements.

# Vivid *e* offers more features adding even more value.

A variety of additional support features add more value through increased productivity – all in an ultrasound system that can fit your budget.



## Enhanced transducer support.

- As a total cardiovascular or shared-service ultrasound system, the Vivide supports your transducer requirements.
- Vivide transducers include a P2D continuous wave Doppler transducer to support ICAEL standards, inter-operative, adult cardiac, linear array, and abdominal transducers.

## Migrated Vivid 7 features improve work performance.

- By migrating elements from our Vivid 7 system, including the stress echo package and advanced reporting tools, your system saves staff time and effort.
- The anatomical M-mode can be adjusted at any plane to simplify positioning and speed up exams.
- You can also store your exams onto removable media for PC viewing with MPEGvue.

## Productivity tools smooth out your workflow.

- Help productivity increase with an integrated patient management system that uses raw data image capabilities and organized comprehensive measurements.
- Our automatic image optimization – in 2D and tissue-spectral Doppler imaging – is easy to use and more efficient.
- Auto TGC reduces the number of image manipulations through optimized scanning.
- A comprehensive set of DICOM functions can improve communication with servers and printers through smoother connectivity.
- Excellent image quality is now within reach of more clinicians. Let the Vivide system from GE Healthcare bring the benefits of ultrasound to you, in one compact system.

Added value with additional capabilities and enhancements.



### TEE (6Tc-RS) Probe

Now the Vivide system can support the TEE (6Tc-RS) probe for OR applications. The TEE offering provides versatility and expansion to other hospital departments or within the echo lab.



### eSmartTrainer module

An eSmartTrainer module is a great reference tool, allowing the user quick access to ultrasound illustrations, views, and brief descriptions during an ultrasound exam.

The eSmartTrainer flexibility allows users to create their own reference guide tailored to their labs.



### Optional equipment to enhance your system.

Our optional docking cart quickly converts your compact, 10 lb. device into a console configuration. Three transducer connectors provide easy access, and the height-adjustable cart makes viewing comfortable and convenient. Other options include an additional 17" monitor positioned above the Vivide to assist with group viewing, and external loud speakers that improve sound quality. An integrated USB and 6-socket power strip are also available.

©2011 General Electric Company – All rights reserved.

General Electric Company reserves the right to make changes in specifications and features shown herein, or discontinue the product described at any time without notice or obligation. Contact your GE representative for the most current information.

\*GE, GE Monogram, Vivid and EchoPAC are trademarks of General Electric Company.

GE Medical Systems Ultrasound & Primary Care Diagnostics, LLC, a General Electric company, doing business as GE Healthcare.

## About GE Healthcare

GE Healthcare provides transformational medical technologies and services that are shaping a new age of patient care. Our broad expertise in medical imaging and information technologies, medical diagnostics, patient monitoring systems, drug discovery, biopharmaceutical manufacturing technologies, performance improvement and performance solutions services helps our customers to deliver better care to more people around the world at a lower cost. In addition, we partner with healthcare leaders, striving to leverage the global policy change necessary to implement a successful shift to sustainable healthcare systems.

Our “healthymagination” vision for the future invites the world to join us on our journey as we continuously develop innovations focused on reducing costs, increasing access, and improving quality around the world. Headquartered in the United Kingdom, GE Healthcare is a unit of General Electric Company (NYSE: GE). Worldwide, GE Healthcare employees are committed to serving healthcare professionals and their patients in more than 100 countries. For more information about GE Healthcare, visit our website at [www.gehealthcare.com](http://www.gehealthcare.com)

GE Healthcare  
9900 Innovation Drive  
Wauwatosa, WI 53226  
U.S.A.

[www.gehealthcare.com](http://www.gehealthcare.com)



imagination at work